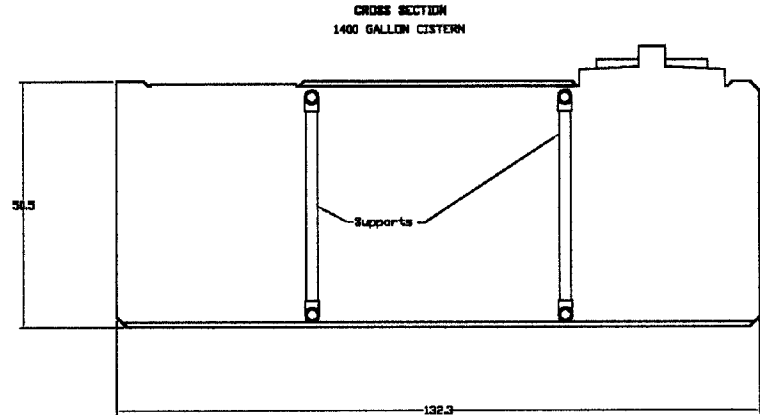
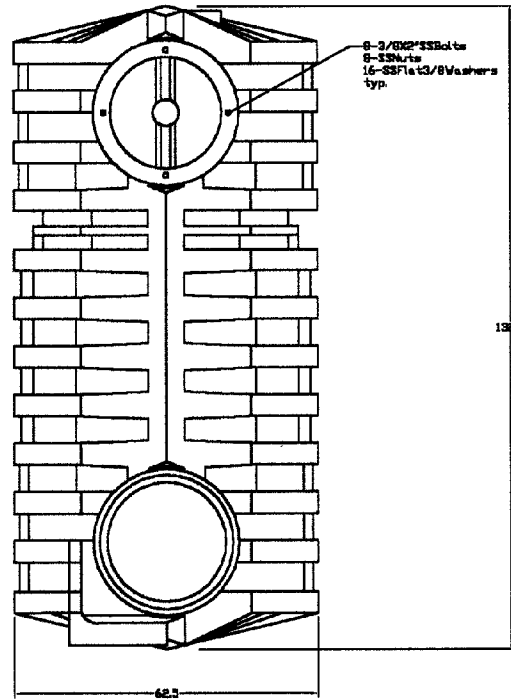
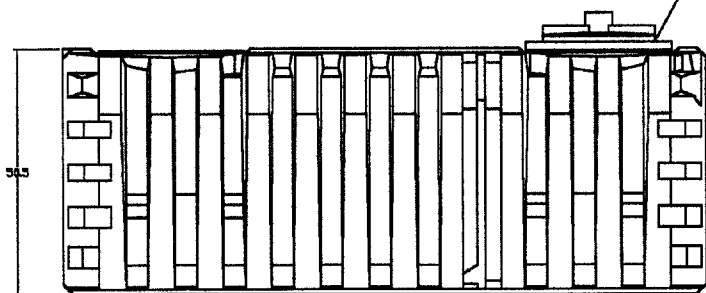
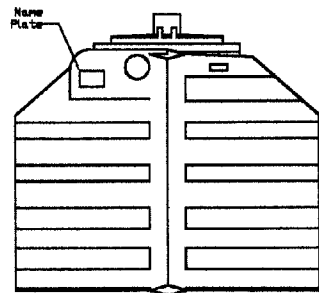


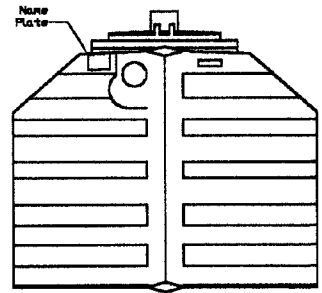
THIS DRAWING MAY NOT BE USED FOR ANY PURPOSE OTHER THAN BY THE OWNER. THE DRAWING & DESIGN ARE PROPERTY OF ROTONICS MANUFACTURING, INC. ALL DIMENSIONS SHOWN ARE OUTSIDE PART DIMENSIONS IN INCHES, AND MAY VARY DUE TO MATERIAL SHRINKAGE. SPECIFICATIONS ARE SUBJECT TO CHANGE WITHOUT NOTICE. GALLONS AND WEIGHTS ARE APPROXIMATE ONLY.



NOTE:
The two supports are made of 2" SCH 80.



3/4" Neoprene combi-back seal typ.



NOTE:
Name plate on both ends. Permanently notched into tank reader.
RNG-3
SEWER COLD
MAX EARTH COVER 3 FT.
DATE MFG.
CISTERN VOLUME 1400 GALLONS

Material: PE Type II
ALL RIBS 625 UNLESS OTHERWISE SPECIFIED.
TYPICAL WALL THICKNESS OF TANK IS 6.88"

RMI-I
716 No. 11th Avenue
Caldwell, ID 83605
Phone: 208-454-9271
Fax: 208-454-3089

RMI-D
6770 Brighton Blvd.
Commerce City, CO 80022
Phone: 303-227-9300
Fax: 303-227-9308

RMI-G
17038 S. Figueroa St.
Gardena, CA 90248
Phone: 310-327-5401
Fax: 310-323-9567

#36985

ROTONICS MFG. INC.				
CISTERN TANK - 1400 GAL				
DRAWN BY :	PAGE :	DATE :	SCALE :	DWG. NO. :
C.Taylor	1 OF 2	02/26/02	1" = 34"	IR - 1250